

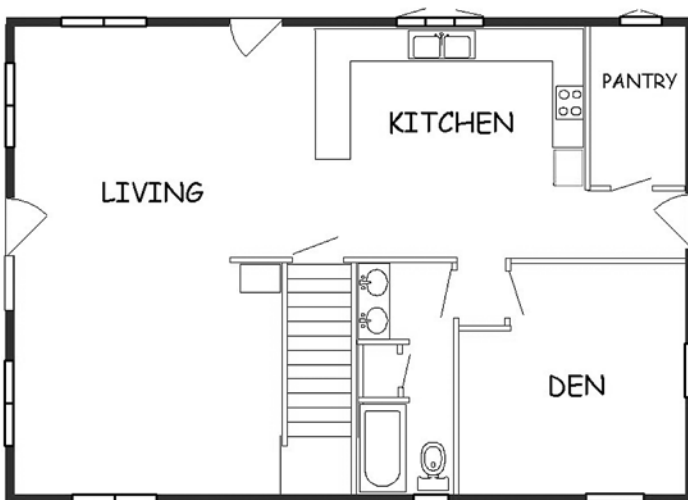


28' x 40' 3-bedroom

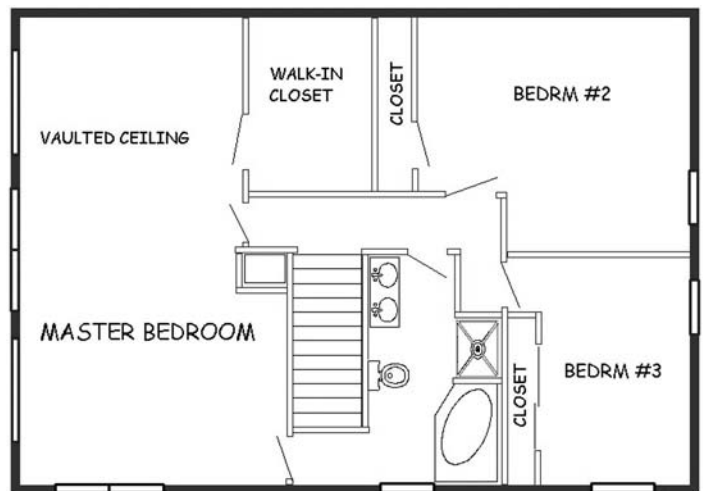
3 Bedrooms, 2 Baths
 2240 square feet of living space
 Flexible Interior Floor Plan

A three-bedroom, semi-contemporary home that lends itself to a great view, afforded by the generous use of glass. This design works well on either a flat or sloping lot. With a walk-out basement, it's usually built with a large sun deck.

All homes available with additions and garages.



First Floor



Second Floor