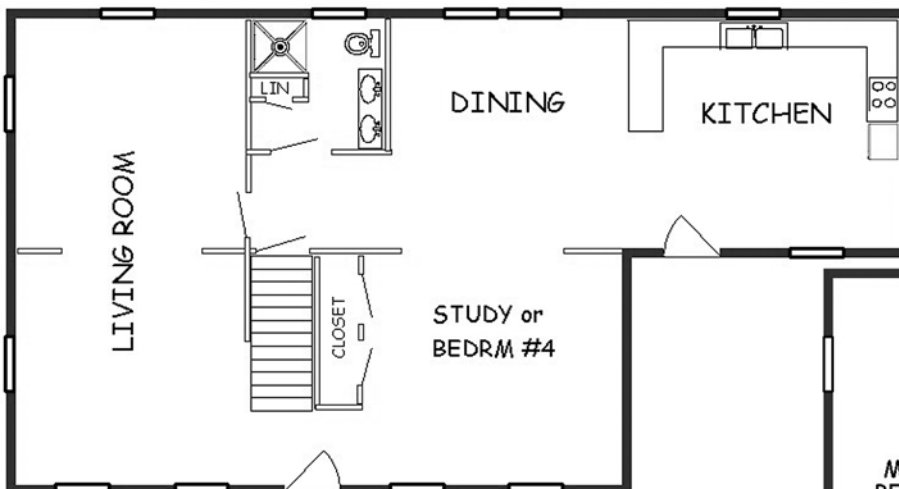




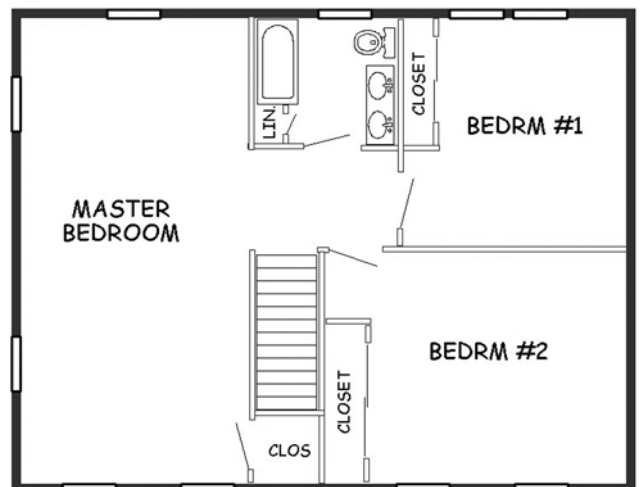
28' x 36' Colonial

3 or 4 Bedrooms, 2 Baths
 2240 square feet of living space (as shown)
 2016 square feet without 14' x 16' ell
 Flexible Interior Floor Plan

A full two-story house with plenty of elbow room. Great for a growing family. If built without the ell, the kitchen moves to the dining area. An attached garage works well with this home.



First Floor



Second Floor